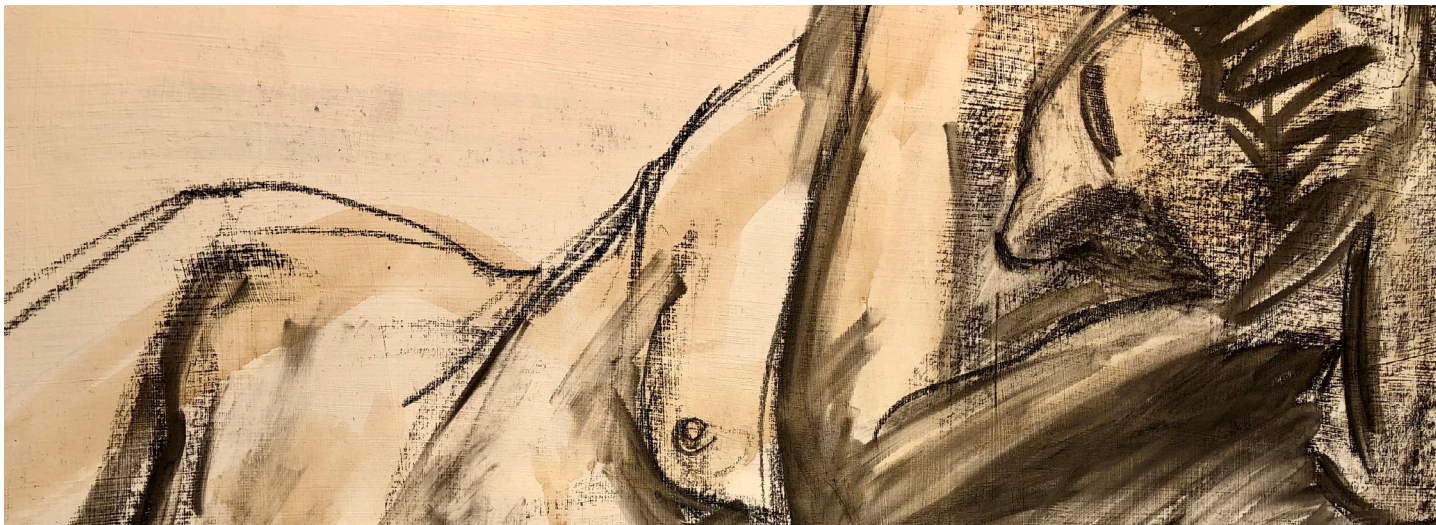


# Visual Arts Practice



*Charcoal drawings by Judy Sorrel*

## Life Drawing

**Every other Tuesday Evening 6–9pm**

Life drawing is a practice opportunity for those interested in the creative possibilities when working with the human form.

Bring your preferred drawing materials (no oil-based media or solvents please) and an easel if you have one. The Hoffman Center has a limited number of easels and drawing materials available on a first come first serve basis if you are unable to bring your own.

*Register: [hoffmanarts.org](http://hoffmanarts.org)*

